



# ERDAS IMAGINE® 2025

## INSTALLITION GUIDE



+



HEXAGON

Training partner



## Brilliant Remote Sensing Labs

### Remote Sensing Portal

*The simplest and fastest track  
for mastering Remote Sensing*

**We focus on practical and applied training**

**16 online courses with step-by-step video tutorials at: <https://remote-sensing-portal.com>  
Remote Sensing Specialist Certificate.. RSS™**

- 1- Space Science and Satellites Overview for General Managers & Supervisors
- 2- Remote Sensing Fundamentals
- 3- Introduction to Practical Remote Sensing (Using ERDAS IMAGINE)
- 4- Satellite Images Geometric Correction and Map Projection (Using ERDAS IMAGINE)
- 5- Satellite Images Visual Interpretation
- 6- Satellite Images Digitizing and Annotation (Using ERDAS IMAGINE)
- 7- Satellite Images Classification Essential (Using ERDAS IMAGINE)
- 8- Satellite Images Enhancement (Using ERDAS IMAGINE)
- 9- Map Production from Satellite Images (Using ERDAS IMAGINE)

### Remote Sensing Professional Certificate.. RSP™

- 10- Satellite Images Subsetting and Mosaicking (Using ERDAS IMAGINE)
- 11- Satellite Images Classification (Advanced) + Image Differencing (Using ERDAS IMAGINE)
- 12- Satellite Images Terrain Analysis (Using ERDAS IMAGINE)
- 13- 3D viewing & Simulation For Satellite Images Using Virtual GIS (Using ERDAS IMAGINE)

### Remote Sensing Solution Developer Certificate.. RSSD™

- 14- Solution Developer Level 1 (Using ERDAS IMAGINE Spatial Modeler)
- 15- Solution Developer Level 2 (Using ERDAS IMAGINE Spatial Modeler)
- 16- Solution Developer Level 3 (Using ERDAS IMAGINE Spatial Modeler)

**Enjoy Learning With Us**

[info@remote-sensing-portal.com](mailto:info@remote-sensing-portal.com)  
[remote-sensing-portal.com](https://remote-sensing-portal.com)



# ERDAS IMAGINE 2025 Quick Installation Guide

- This quick guide will guide you through downloading, installing, and licensing **ERDAS IMAGINE 2025**.
- This guide is dedicated to support the online students who are studying in the [Remote Sensing Portal](#) of **Brilliant Remote Sensing Labs** Company. We encourage trainees from all over the world to enroll, study online, receive Free student licenses from <https://remote-sensing-portal.com>.

## Summary of installation steps:

You will need to follow the following three steps:

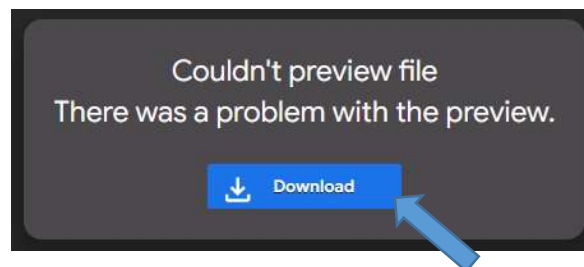
- **First**, downloading and installing "ERDAS IMAGINE 2025" (version 16.9.0).
- **Second**, downloading "ERDAS IMAGINE Remote Sensing Dataset". It represents the satellite images dataset needed for our online courses and exams.
- **Third**, activating ERDAS IMAGINE License by entering its Activation ID.

## First, downloading and installing ERDAS IMAGINE 2025:

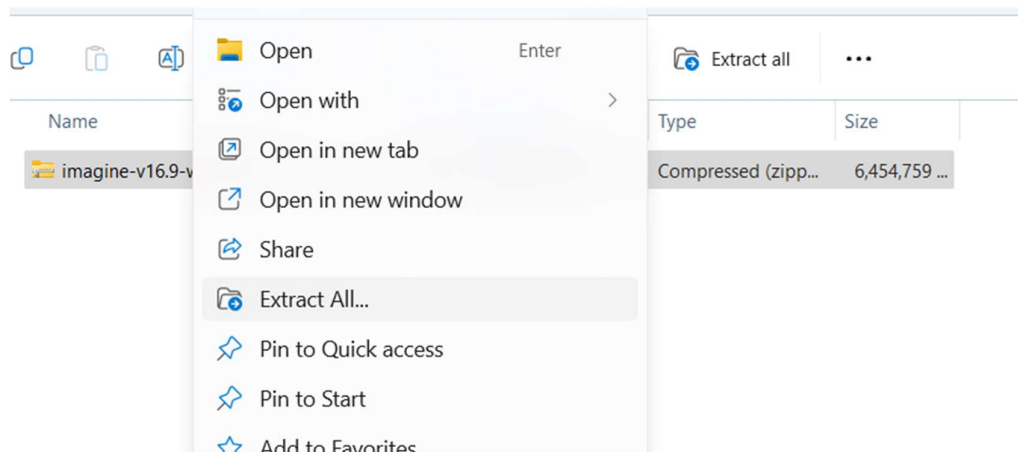
1- Download ERDAS IMAGINE 2025 from the following Google Drive link:

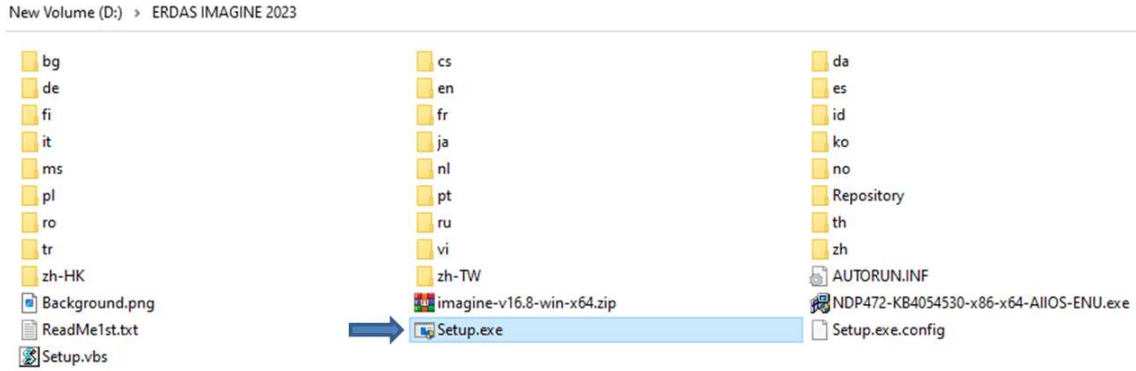
<https://drive.google.com/file/d/1WMP4OgKsblizL3XYiSJHICZAXLXfPQO/view>

The following image shows the download link of the file (imagine-v16.9-win-x64.zip). It said that there will be no preview as the file type size is too large. Click the (Download) button then select the location/path on your computer to download the file.

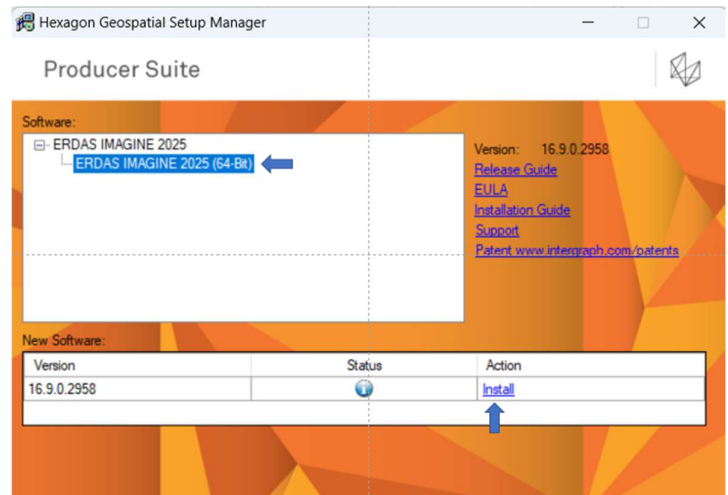
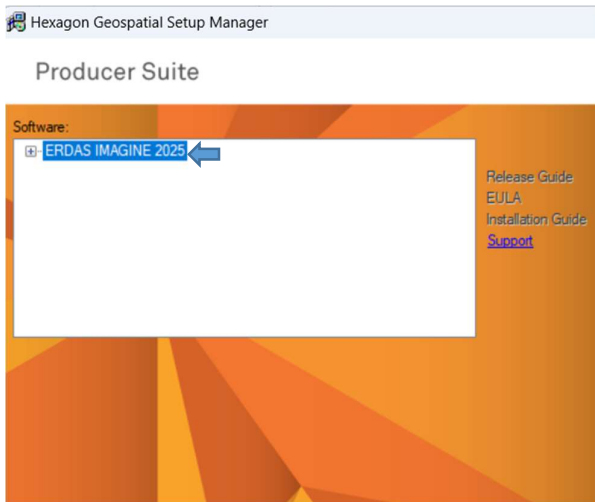
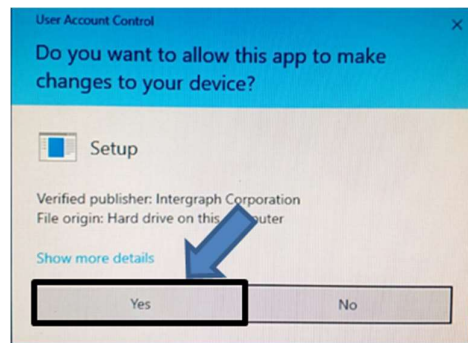


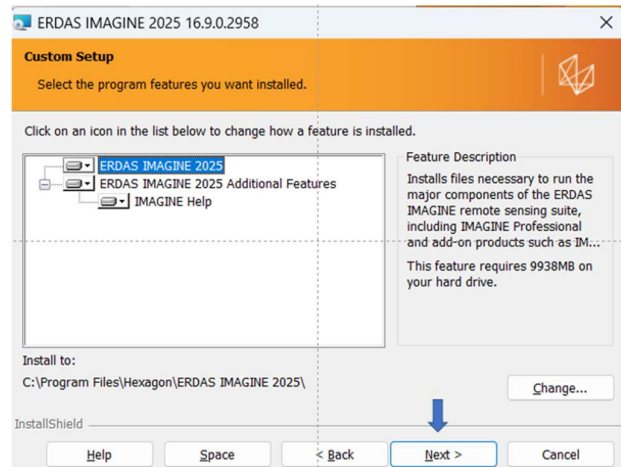
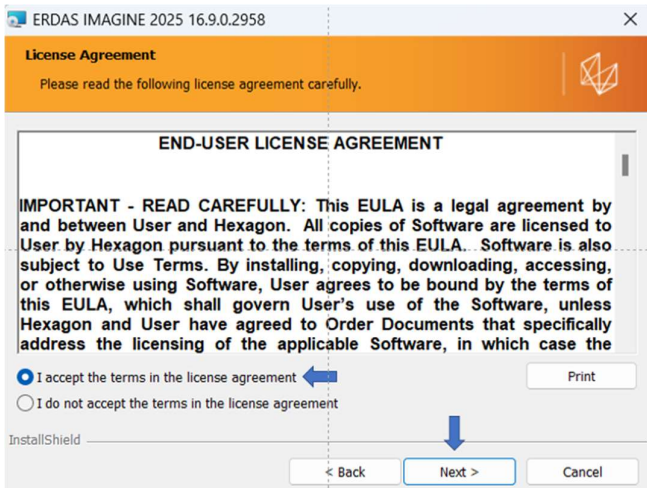
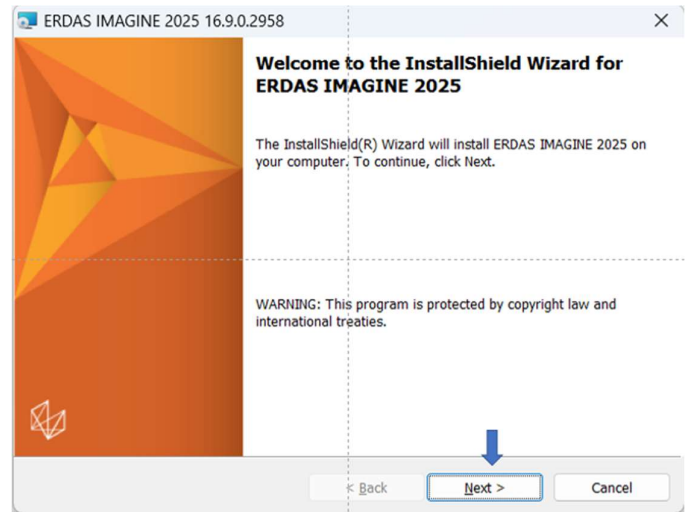
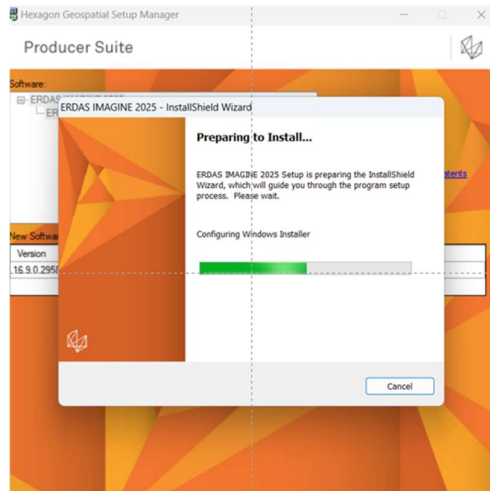
Unzip or extract the downloaded file to a temporary directory (**by right clicking it then click "Extract Here"**) then open the extracted folder as shown in the following image.



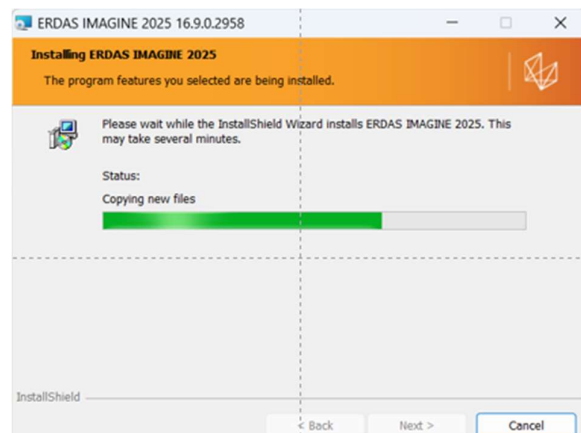
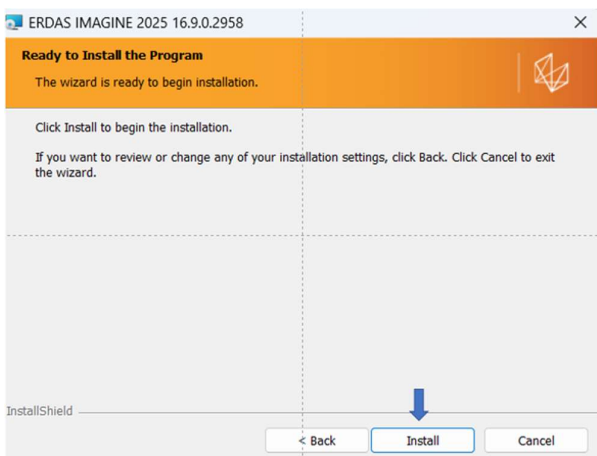


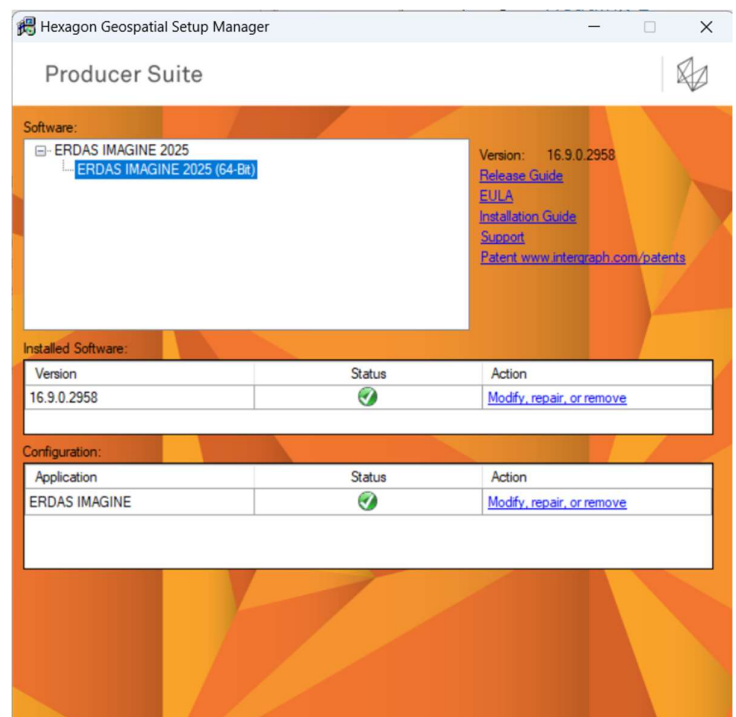
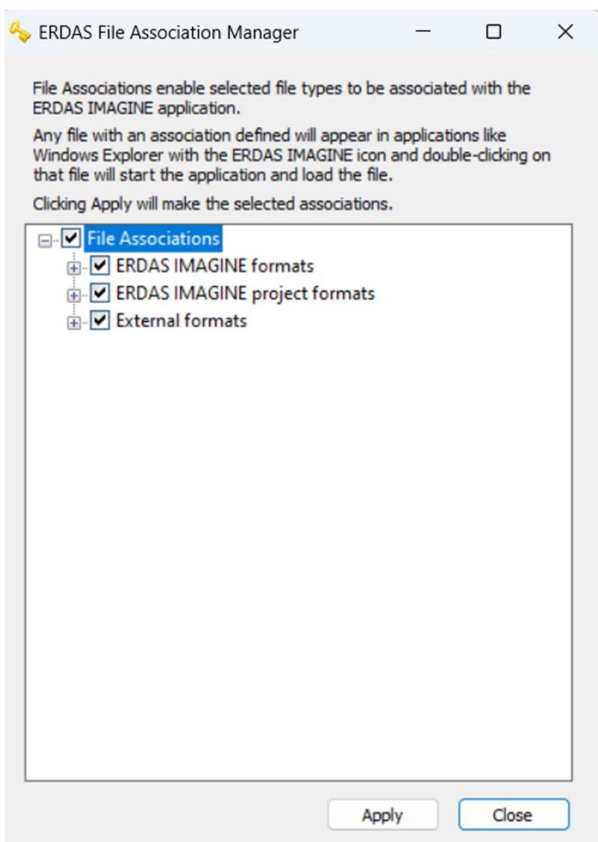
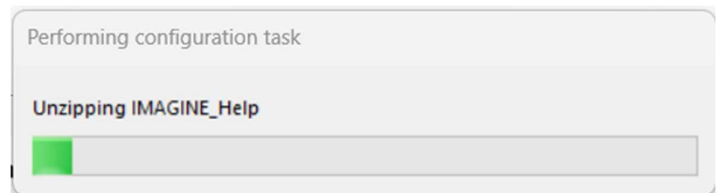
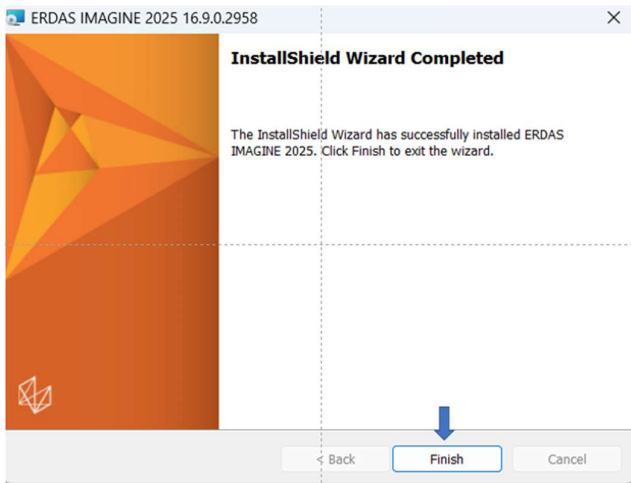
- 2- Double click on the file named “**setup.exe**” as in the previous image, the Setup Manager Window will appear again. Click “Yes” as shown in the images, then Click the “+” sign next to “**ERDAS IMAGINE 2025**” to open the list (if it is not already opened), then click **ERDAS IMAGINE 2025 (64-Bit)**, then click “**Install**” and follow the installation instructions as shown in the following images, knowing that your computer may need to reboot.





Click next (or click change the installation path to another partition if you don't have enough storage in this partition (at least 10 GB Free Space))

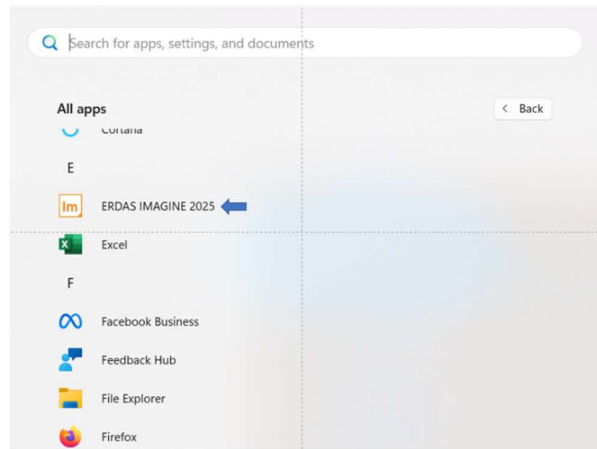




Close the above window, now installation complete

Check all the above check boxes and click apply

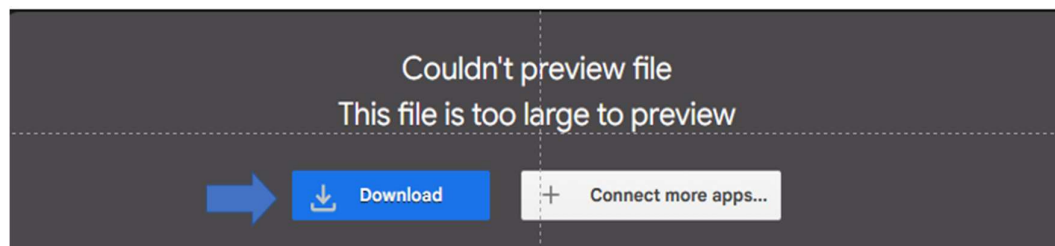
Now you have ERDAS IMAGINE installed on your computer, and you can find it in your Windows' Start Menu as shown in the following image, **but it will not work yet** because you still need to activate the license by entering its "Activation ID". This will be explained in the third section of this installation guide after downloading the Remote Sensing Example data.



## Second, downloading “ERDAS IMAGINE Remote Sensing Dataset”:

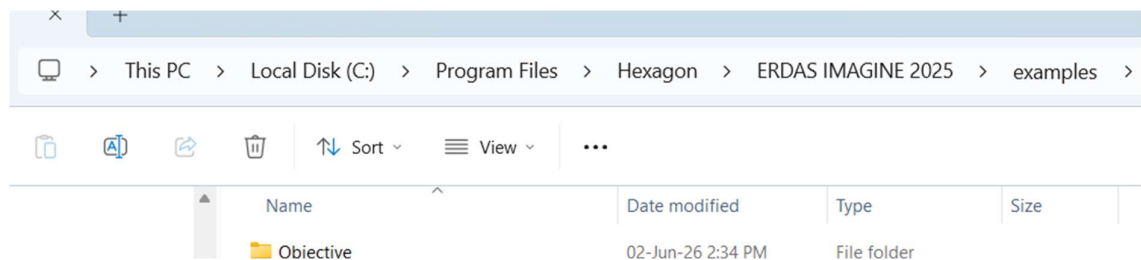
Dataset that includes various types of satellite images needed in the practical tasks of the courses and exams offered by Brilliant Remote Sensing Labs. In case you haven't downloaded it, you can download it by visiting the following link, then press “Download” button shown in the image below.

<https://drive.google.com/file/d/1jiNkp9It4faokeKGxSh27D81O1m0UPpw/view?pli=1>



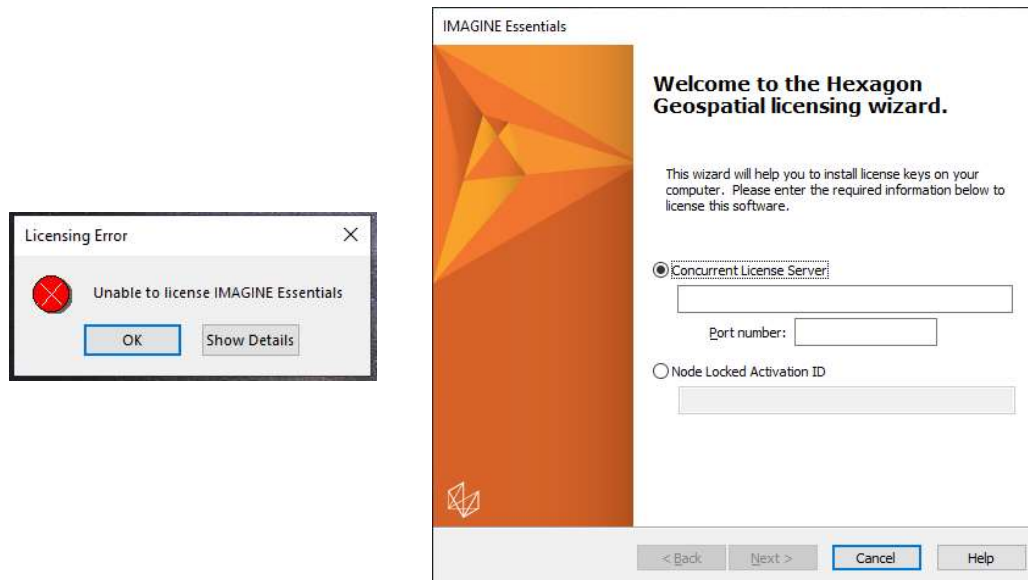
**Note:** It is **highly recommended** that you download and extract the dataset in inside ERDAS IMAGINE default folder the following path: C:\Program Files\Hexagon\ERDAS IMAGINE 2025\examples

(or in other path if you have changed ERDAS IMAGINE installation path or partition).



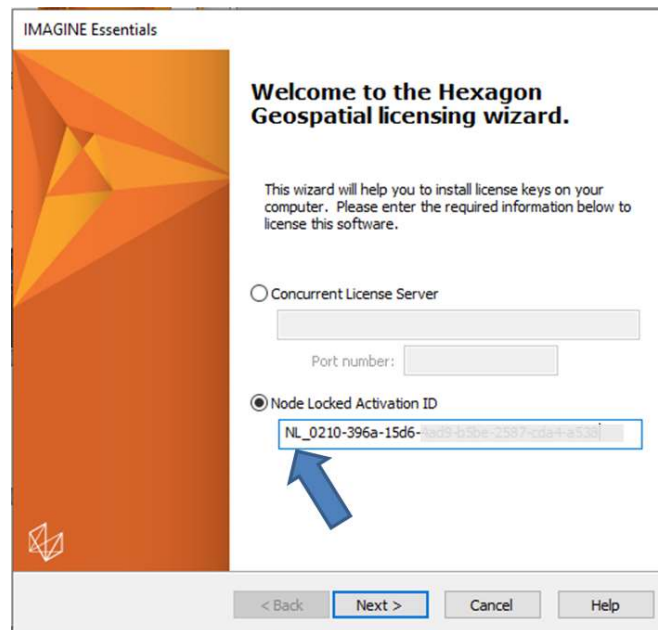
### Third, activating ERDAS IMAGINE License by entering its Activation ID.

- 1- Run ERDAS IMAGINE 2025 from your Windows Start menu. On the first time, or after each license expiration, the following windows will appear.

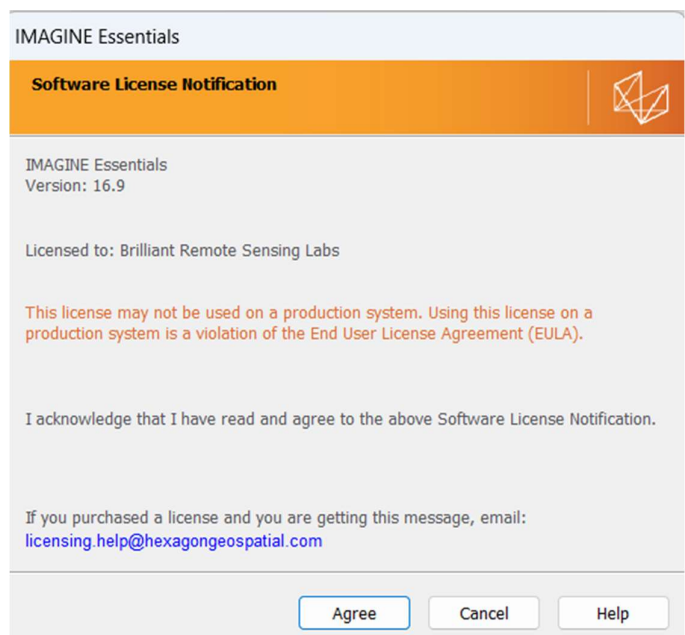
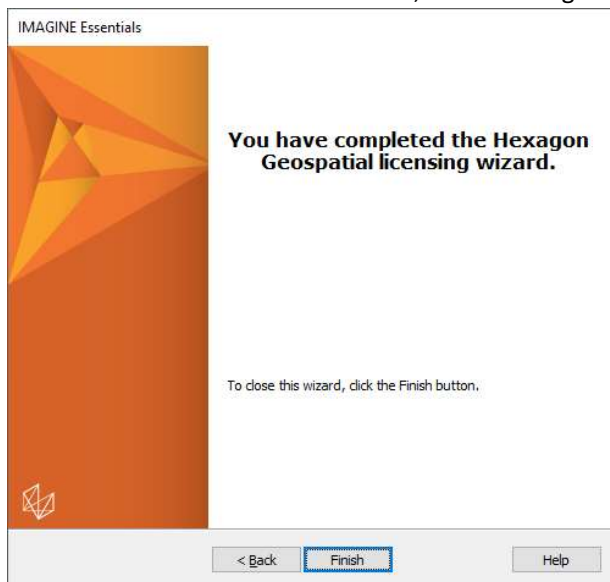


- 2- If your Activation ID starts with the letters “NL”, then Select the second choice “**Node Locked Activation ID**” and “**copy**” the Activation code sent to your email from [noreply-siglicensing@hexagon.com](mailto:noreply-siglicensing@hexagon.com) or from Remote Sensing Portal, and “**Paste**” it in the text box shown in the previous image, then press “**Next**” to activate the license. You must have a good internet connection during license activation. Then click **finish**. The email title will probably be: “**Hexagon's Safety Infrastructure and Geospatial Division Product Licenses**”.

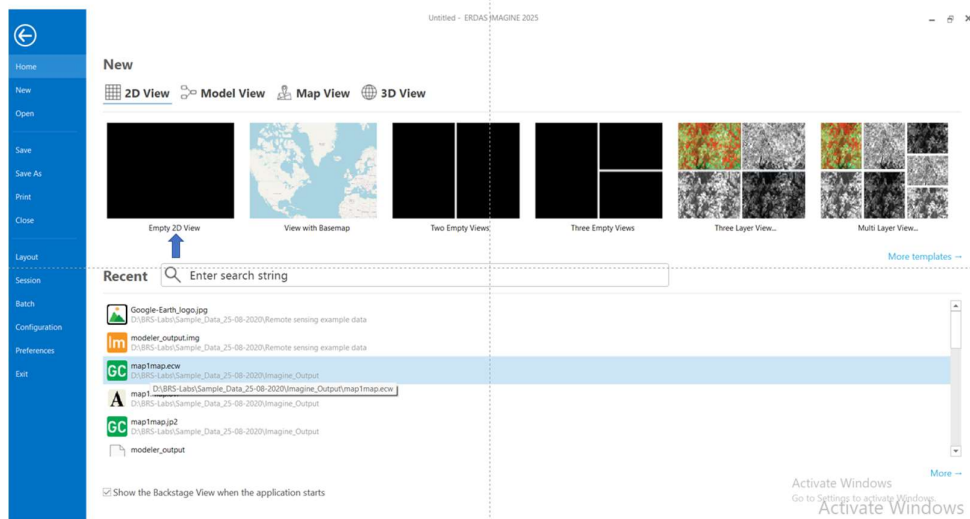
**Note:** in case your Activation ID starts with the letters “CC” instead of “NL”, then you must past it in the “Concurrent License Server” or Geospatial License Tool



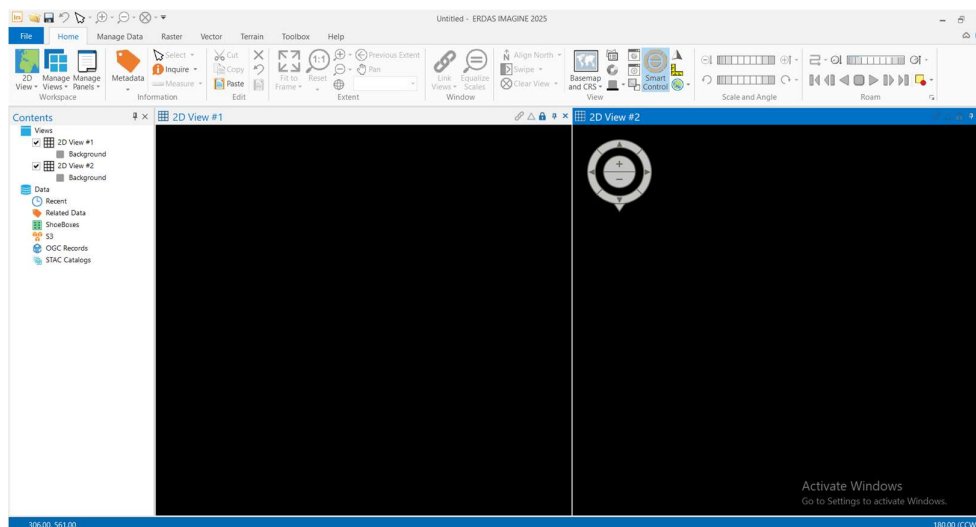
3- Press Finish below, the following window will appear, read its instructions & press "Agree".



4- After Clicking Agree, wait for the ERDAS IMAGINE window to open.



5 – On this window, click (Empty 2D View).



**Congratulations!** Now, you have finished all steps and have ERDAS IMAGINE working.

### **Notes regarding licenses:**

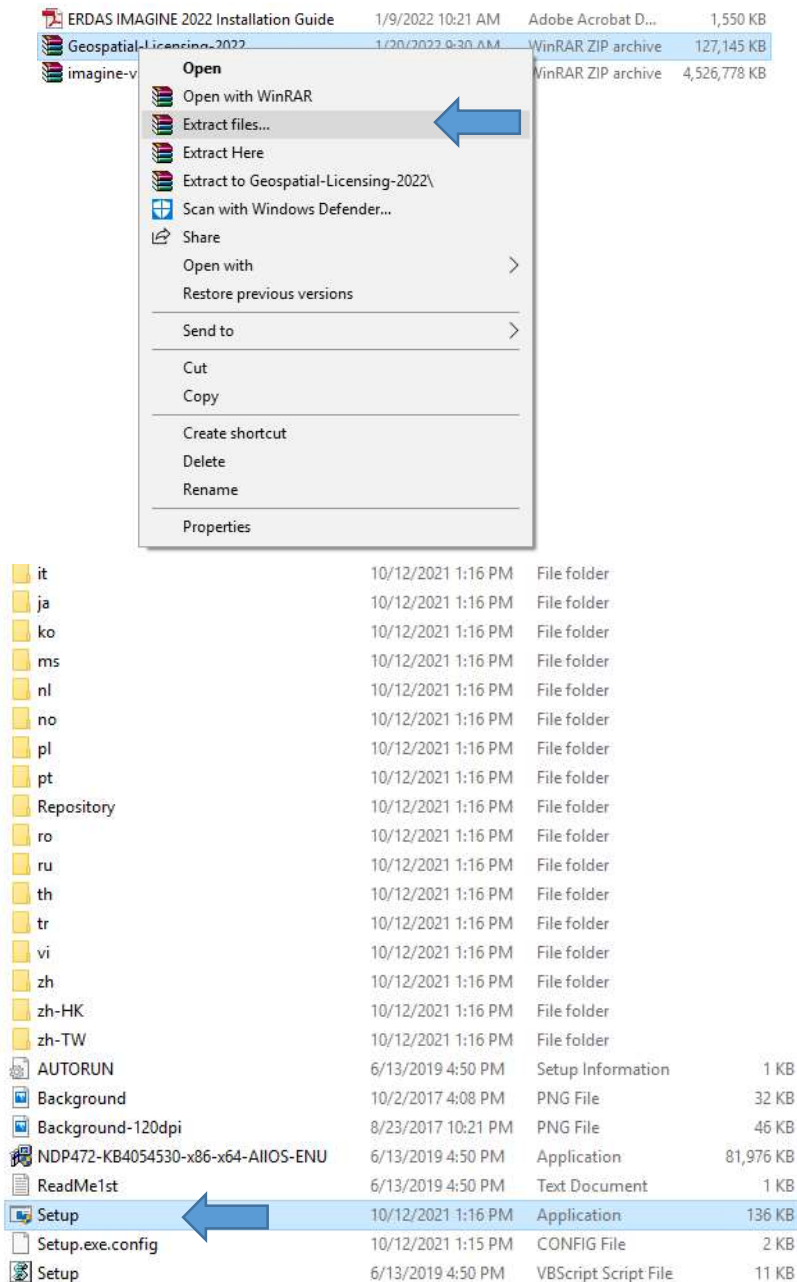
- ERDAS IMAGINE Professional Licenses: Each license offered by Brilliant Remote Sensing Labs is valid ONLY for the period of your study on the Remote Sensing Portal.
- ERDAS IMAGINE Essential Licenses: Each license can be valid for longer durations but they can be offered only to Universities or K12 Education students enrolled in our K12 Education platforms.

## Alternative method for Activating ERDAS IMAGINE License by using Geospatial License Tool (Read the warning below first)

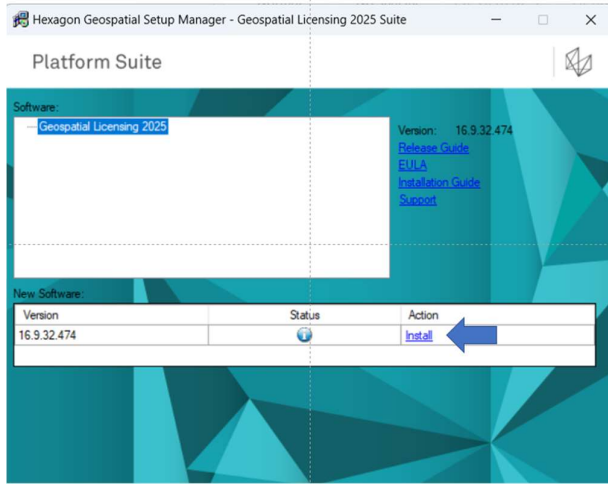
**Warning:** For simplicity and ease of use, don't use the following method except if your license (activation code) starts with the letters "CC" (and not "NL") and you have failed in activating it with the previous method explained before in the previous pages.

Download the Geospatial license tool from this link and extract it. Then follow the steps.

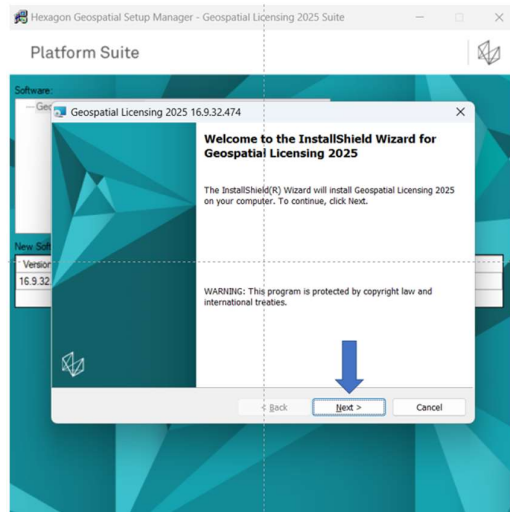
[https://drive.google.com/file/d/19u-X6s2Jk6jKf5HvjVVQT\\_DqcU1SLxqp/view?usp=drive\\_link](https://drive.google.com/file/d/19u-X6s2Jk6jKf5HvjVVQT_DqcU1SLxqp/view?usp=drive_link)



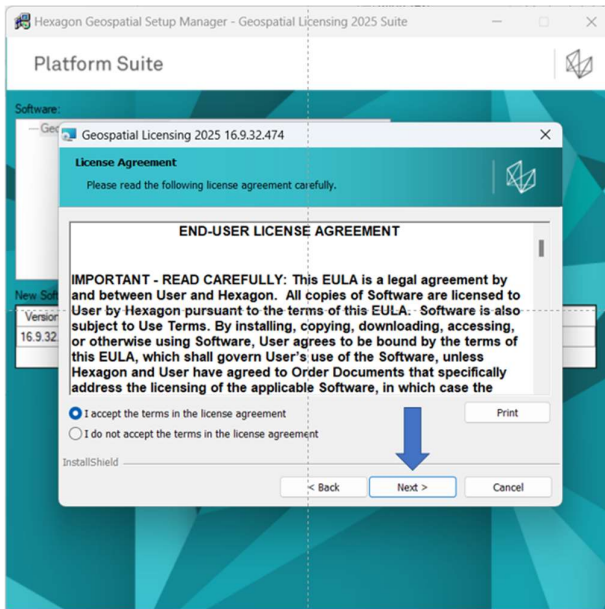
01



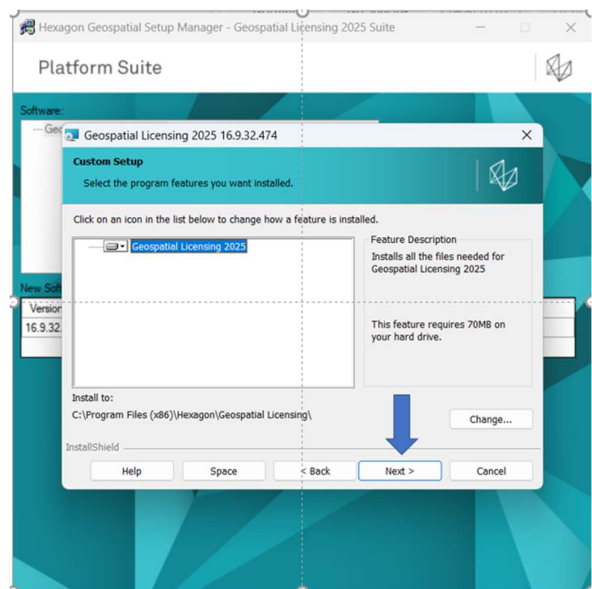
02



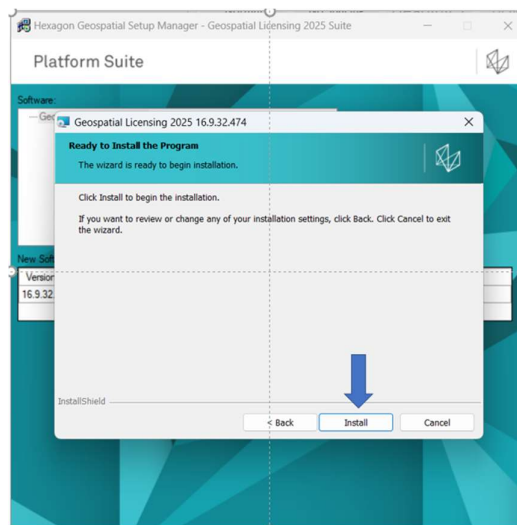
03

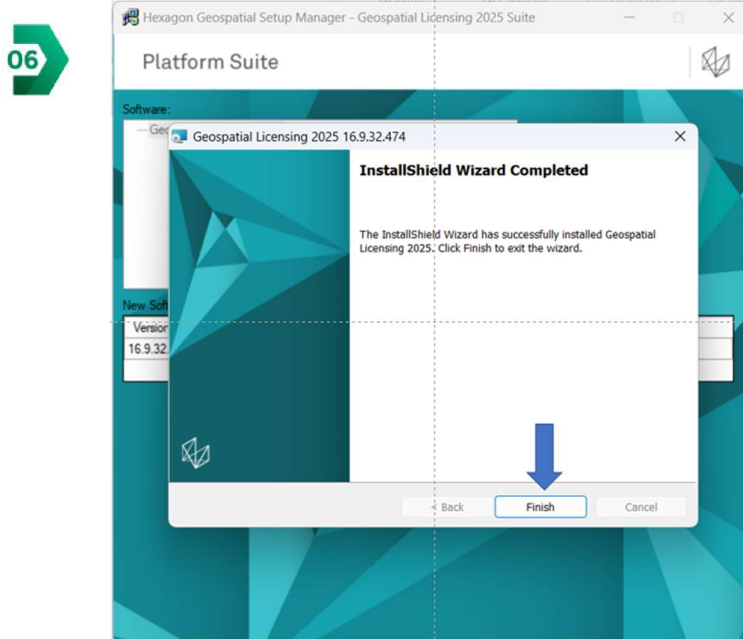


04

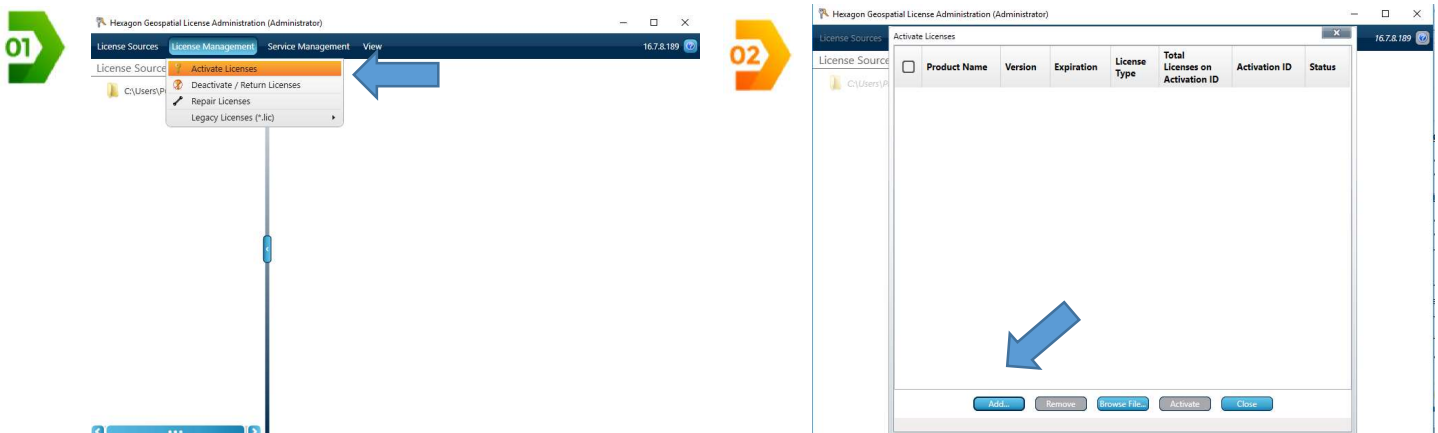
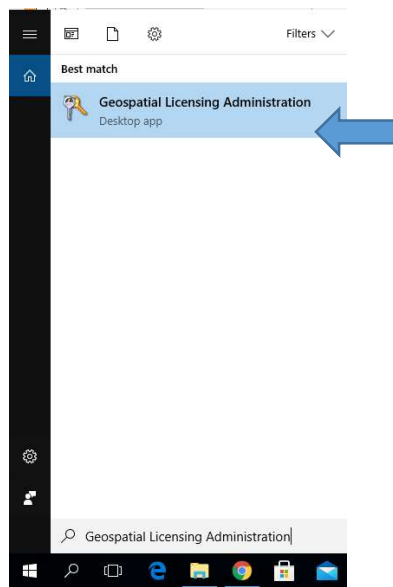


05



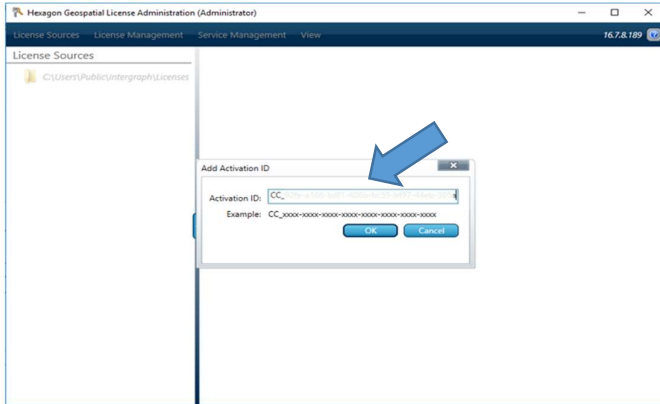


To Run Geospatial Licensing, Search in your start menu for **“Geospatial Licensing Administration”**

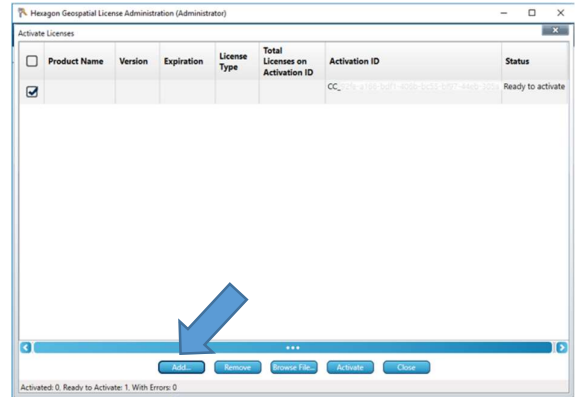


Past your "Activation ID" and click "OK"

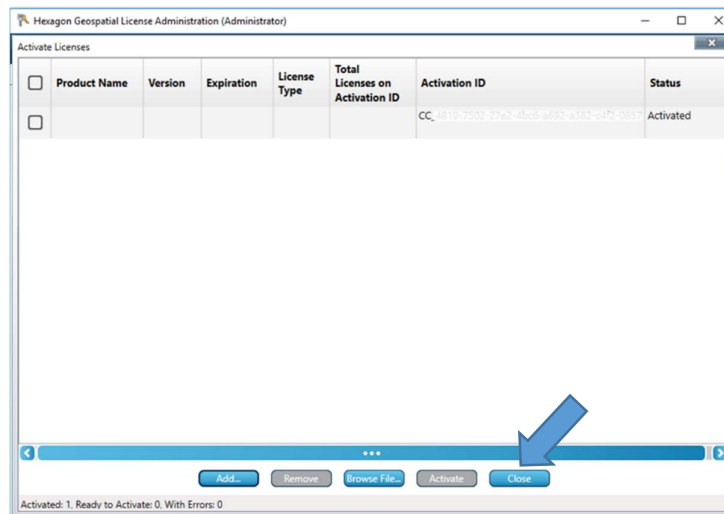
03



04



05



**ENJOY Learning Remote Sensing With Us**

**Brilliant Remote Sensing Labs**

[www.Remote-sensing-portal.com](http://www.Remote-sensing-portal.com)

<https://www.facebook.com/BRSLabs/>

<https://www.linkedin.com/company/brilliantremotesensinglabs>

<https://www.youtube.com/channel/UCP7hppfr7w0PgBgf7oT2nhg>



**HEXAGON**

---

Training partner

